



PRODUCTS & SERVICES



CONTENTS

- 3. About Fuchs
- 4. About Fuchs' Open Gear Division
- 5. Open Gear Services
 - > Operational Inspection
 - > Static Inspection
 - > Thermography
 - > Fatigue Repair
 - > Magnetic Particle Inspection (MPI)
 - > Inspection Reporting
 - > Reconditioning
 - > Dynamic Lubricant Removal
 - > Dynamic Alignment
 - > Gear Refurbishing
- 14. Our Products
 - > Lubrication System
 - > Bearing Lubrication System
 - > Econolube Lubrication System
 - > Bulk Containers
 - > Bulk Container Heater
 - > Bulk Container Heater Blanket
 - > CEPLATTYN® GT 10
 - > CEPLATTYN® KG 10 HMF 2500
 - > CEPLATTYN® KG 10 HMF 1000
 - > CEPLATTYN® MG 15 HMF
 - > CEPLATTYN® RN
 - > CEPLATTYN® GT RN
 - > CEPLATTYN® 300
 - > STABYL L-TS MO
 - > STABYL 300 AL 2
 - > STABYL HD
 - > STABYL ECO EP 2
 - > Action 707



ABOUT FUCHS

FUCHS PETROLUB is a global Group based in Germany which produces and distributes lubricants and related specialties around the world.

The Group, with its headquarters in Mannheim, ranks number one among the world's independent lubricant providers.

The wholly owned Australian subsidiary has been supplying specialised lubricants since the late 1890's and is the leading market player in many lubricant sectors.

Australian Manufacturing facilities are located in Melbourne, Perth and Newcastle, all with ISO9001 certification and individual distribution, R & D and quality control capabilities.

In addition, Fuchs' extensive range of specialist lubricant services is supported by 12 qualified laboratory technicians providing a vast array of fluid analyses including the highly specialised condition monitoring tool known as CENT.

The Fuchs Group is at the leading edge in formulation and application technology of all types of rapidly biodegradable lubricants and functional fluids, leading the development of the PLANTO product range and a continued commitment to the environment through the Fuchs Environmental Policy. There is no better testament to this commitment than Fuchs' Melbourne operation being awarded ISO14001 Environmental Certification.

ABOUT FUCHS' OPEN GEAR DIVISION

FUCHS' OPEN GEAR DIVISION consists of a team of dedicated technicians whose sole focus is ensuring the correct lubrication and maintenance for your Open Gear Drive.

The Open Gear Division provides extensive inspection and comprehensive reporting of your gear drive. This includes on line drive train vibration and temperature assessment including still and video thermography by trained and certified technicians. Static examination includes wear assessment by tooth profile measurement, lubrication system functionality tests and tooth surface photographic documentation.

Detailed inspection and repairs such as gear MPI, fatigue removal and tooth refurbishing is also provided.



OUR SERVICES

OPERATIONAL INSPECTION

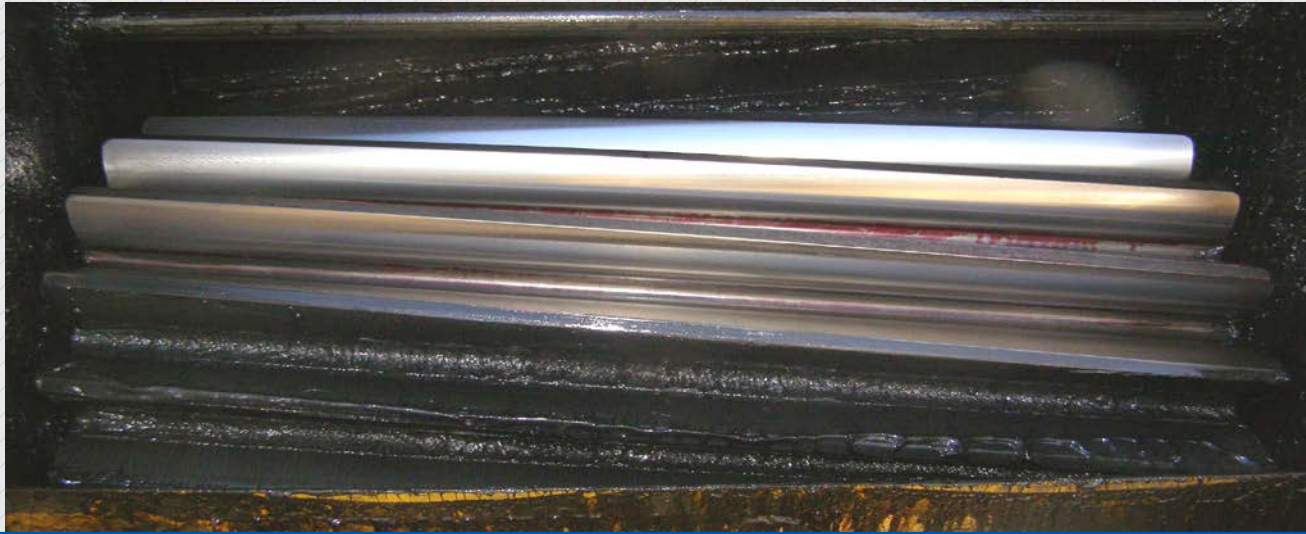
An operational inspection of your equipment Open Gear Drive provides a dynamic "snapshot" of the gear set and drive train conditions.

These inspections include examination and photographic documentation of the Pinion and Girth gear under strobe light conditions. Drive train bearing vibration values are recorded using RMS equipment and temperature assessment is performed to confirm dynamic gear alignment using infra red thermometer plus still and video thermography.

The lubrication system is functionality tested and displacement measured to ensure correct consumption regimes.

All conditions observed are documented and trended in detailed reports with relevant comments and recommendations provided by technicians who are trained and certified in all areas of the inspection performed.



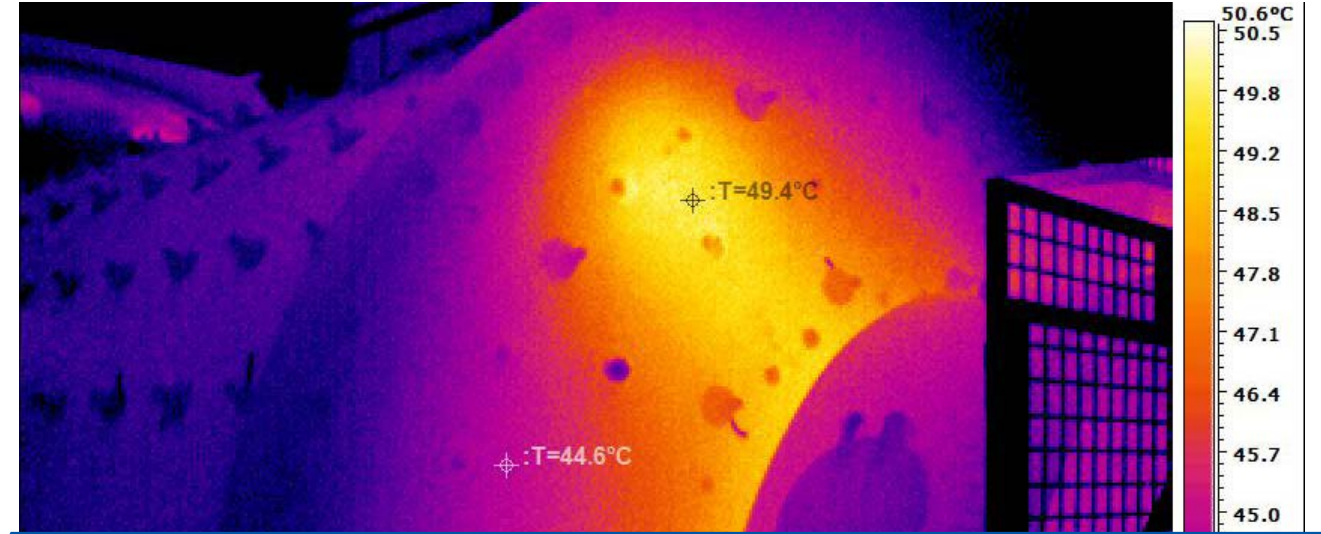
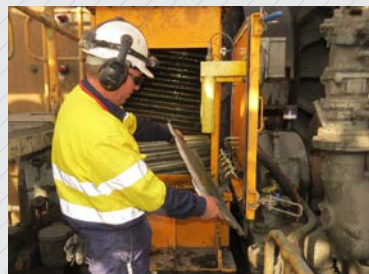


STATIC INSPECTION

A static inspection of your machines Open Gear Drive provides a detailed document of the gear set surface conditions.

The inspections provide detailed assessment of the Pinion and Girth gear (contact and non contact surfaces) and includes photographic documentation. Measurement of the Pinion tooth profile is performed and data is trended against original and previous inspections to assess for surface wear.

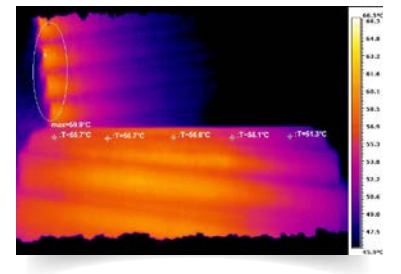
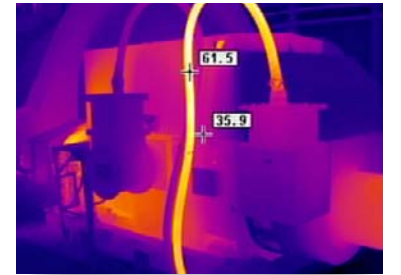
Static / manual checks of the lubrication system are also performed with displacement of the system measured to confirm consumption regimes. All conditions observed are documented in detailed reports with relevant comments and recommendations provided by technicians who are trained and certified in all areas of the inspection performed.

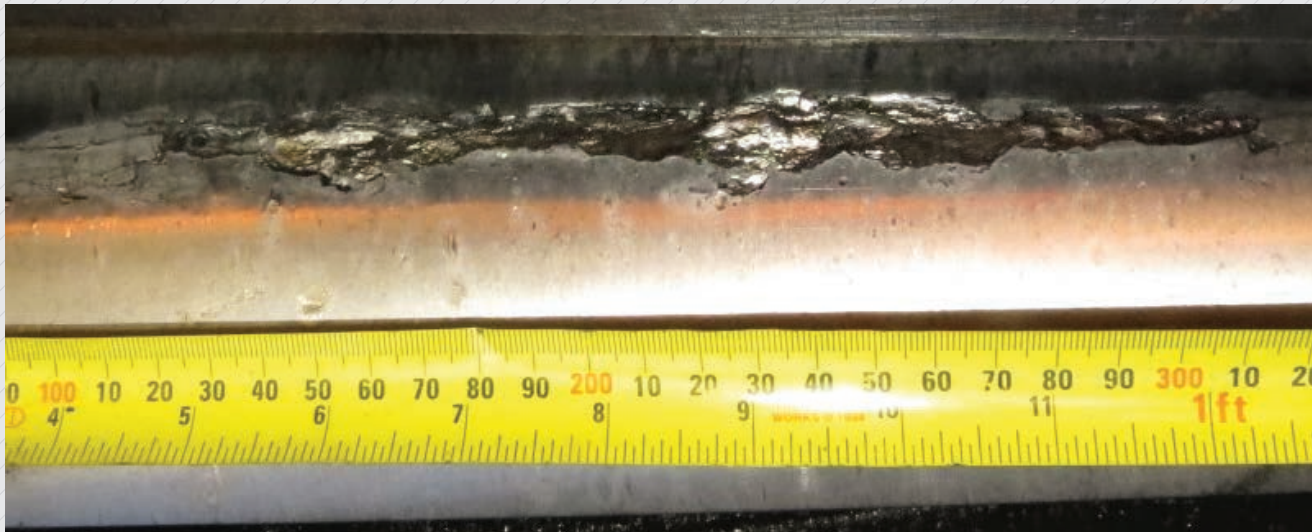


THERMOGRAPHY

Examination of your machine and Open Gear Drive using THERMOGRAPHY can assist in ensuring the longevity of your equipment.

Fuchs Open Gear technicians can provide Thermographic still and digital video of the operational gear drive to assess for thermal deviations in the dynamic gear set. This method of examination can assist in highlighting contact and run out errors and also dispel "false misalignment indications" that can be due to hot drive train bearings or tight seal conditions.





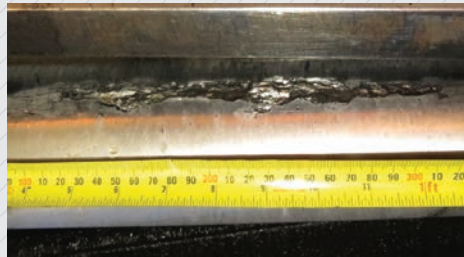
FATIGUE REPAIR

Open Gear surface fatigue may be attributed to many factors however dynamic misalignment or overloading of a gear region is the primary cause.

Operation of the Open Gear with this condition can cause rapid degradation of the gear surface, reduced gear longevity, tooth outbreak and therefore additional costs in machine parts, repairs and costly downtime.

Removal of fatigue by precision mechanical grinding and blending of the region is known to slow the gear deterioration and extend component life.

Fuchs Open Gear Technicians can perform this specific gear repair as well as providing detailed reporting of the fatigue cause and suggested remedial course of action to maximise gear longevity.

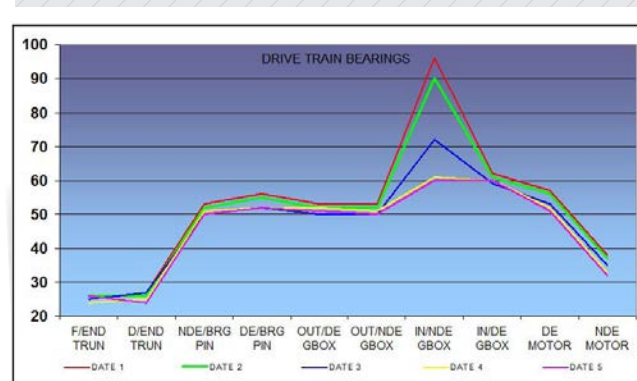
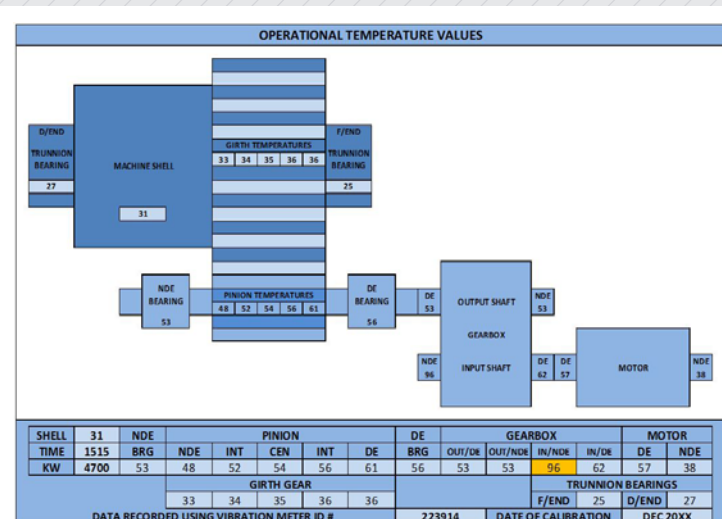


MAGNETIC PARTICLE INSPECTION

As part of our commitment to maintaining your critical path machines, Fuchs can provide the Non-Destructive Inspection process Magnetic Particle Inspection (MPI).

If areas of concern are identified during this detailed gear assessment our technicians can perform specialist crack / fatigue relief to effected areas to ensure expert remedial action is performed without delay.





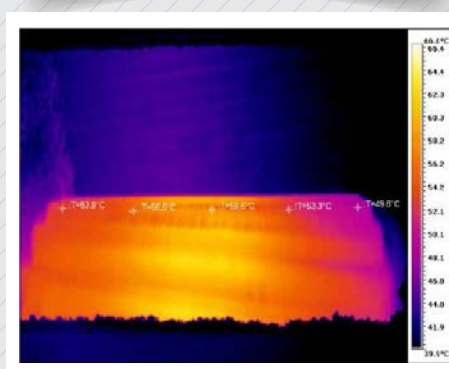
INSPECTION REPORTS

Fuchs Open Gear Lubricants and Technical Services are supplemented by our highly detailed inspection reports that enhance your own site maintenance practices to protect your critical path assets and prevent unscheduled downtime.

Fuchs Open Gear Division service engineers are all technical trade qualified and certified; their sole focus is ensuring the maximum longevity of your rotating equipment gear drive.

Fuchs Open Gear reports are written by qualified service engineers ensuring you receive credible information that is used by many of our customers to satisfy their warranty and insurance obligations.

OPEN GEAR LUBRICATION SYSTEM										
CONDITION	NOT FIT	NOT CHECK	OK	ATT	CONDITION	NOT FIT	NOT CHECK	OK	ATT	
LUBRICANT CONDITION	●	●	●	●	PUMP OPERATION	●	●	●	●	
SPRAY VALVE OPERATION	●	●	●	●	SAFETY RELAY STATUS	●	●	●	●	
LUBE SUPPLY PRESS	●	●	●	●	AR-STOP VALVE STATUS	●	●	●	●	
WATER COOLING	●	●	●	●	NOISE ALARM	●	●	●	●	
TEMP. ALARM	●	●	●	●	SPRAY NOZZLES	●	●	●	●	
REACTOR / DIST. FUNCTION	●	●	●	●	PRESSURIZED OPERATION	●	●	●	●	
SPRAY FILTER	●	●	●	●	CONTINUATION	●	●	●	●	
CONTROL CABINET CONNECTION	●	●	●	●	AR-FILTER	●	●	●	●	
ACTUATOR/AR-STOP		600			PUMP AR STOP (SPN)		650			
SPRAY PUMP PRESS		7,000			SPRAY NOZZLES		7			
SPRAY LUBRICANT FLOW		15			SPRAY INTERVAL TIME (SEC)		115			
WATER-BATH TEMPERATURE		1.1			AIR FLOW					
CURRENT CONSUMPTION (AMPERE)		241			RECOMMENDED CONSUMPTION (AMPERE)		240			
APPLICATION OF LUBE	FINISH	OPEN			REACTOR / DIST. STATUS	YES				
LUBRICATION CHECKED USING SCALES ID#					9396-1	CALIBRATED			DEC 14	



Report for Open Gear Drives

COMPANY - SITE
MACHINE # / ID
AMBIENT TEMP = 36 DEGREES C

OPERATIONAL DD 00/00/0000

STATIC DD 00/00/0000



CUSTOMER INFORMATION

HEAD COMPANY	EXAMPLE
COUNTRY	AUSTRALIA
PLANT NAME	EXAMPLE
ATTENTION TO	

MACHINE INFORMATION

MACHINE TYPE	SAG
MANUFACTURER	
YEAR OF MANUFACTURE	2002
RATED POWER (KW) / (HP)	6000 KW

LUBRICANT INFORMATION

LUBRICANT MANUFACTURER	FUCHS LUBRITECH
LUBRICANT TYPE	CEPLATTYN GT 10
LUBRICATION SYSTEM	FUCHS 7 SPRAY
TYPE (DUAL LINE ETC)	SLV INJECTOR (PINION)

GEAR INFORMATION

GEAR TYPE	HELICAL
GEAR WIDTH (MM)	920
LOAD DISTRIBUTION (%)	98
MACHINE DOR (VIEW FROM DISCHARGE END)	CCW
NUMBER OF PINIONS	SINGLE
PINION GEAR NON CONTACT CONDITION	NEW
GIRTH GEAR NON CONTACT CONDITION	NEW

QUICK VIEW CONDITIONS

OPEN GEAR SURFACE CONDITION	
VIBRATION CONDITIONS	GEARBOX
TEMPERATURE CONDITIONS	
PINION PROFILE	
OPEN GEAR LUBRICATION SYSTEM	
OPEN GEAR LUBRICANT	
BEARING LUBRICANT	
BEARING LUBRICATION SYSTEM	LEAK

QUICK VIEW LEGEND

ALERT	WARNING	OK	NOT CHECKED
NAME OF TECHNICIAN			
DATE OF LAST INSPECTION		TUESDAY 00/00/000	



OPERATIONAL PINION GEAR



OPERATIONAL GIRTH GEAR



LUBRICANT SPRAY APPLICATION PATTERN



RECONDITIONING

Gear Reconditioning is a form of forced Running In and is an aggressive form of conforming the gear surfaces in a short period of time.

Reconditioning can be used to correct different gear conditions such as reduce localised surface loading, smooth surface conditions after remedial repairs and to reduce gear related vibration.

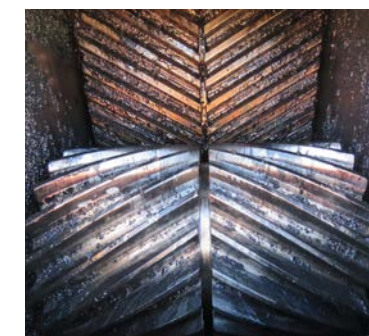
Due to the aggressive effects of the product, Gear Reconditioning can only be performed by trained and experienced Fuchs Open Gear Technicians.



DYNAMIC LUBRICANT REMOVAL

As part of our commitment to maintaining your critical path machines, Fuchs can provide lubricant removal from your dynamic Open Gear Drive.

Lubricant removal helps to reduce your machine downtime when maintenance activities require clean gear surfaces, such as Non Destructive Inspection, Gear resurfacing, Gear removal etc.

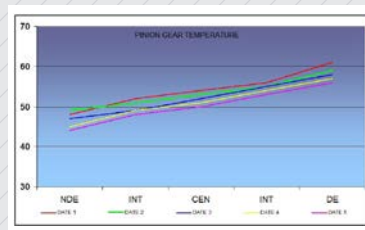
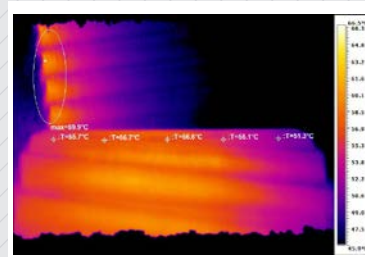




DYNAMIC ALIGNMENT

Correct Open Gear Drive dynamic alignment is critical to the longevity of your equipment. Operation of the gear drive with an excessive load bias indicated as a large temperature differential across the Pinion can lead to surface scuffing / scoring, surface fatigue and premature gear failure.

Even if the gear parallel alignment is correct at setup, influences such as machine load and power will effect the "dynamic" alignment of the gear set and correction via shim or horizontal movement is normally required. Fuchs Open Gear Technicians can check current conditions, detail the required mathematical correction, perform the adjustment and then monitor after restart to ensure acceptable load distribution is achieved.



GEAR REFURBISHING

Damage or wear sustained to a machine Girth gear may be cause for this very costly gear component to be reversed or replaced involving many hours of downtime, specialist labour and equipment hire.

Dependant on the conditions, the Girth gear may be hand sanded to enable further operation of the machine on this gear surface providing additional longevity, this repair is called Gear Refurbishing. Fuchs Open Gear Technicians can perform this specific gear rectification providing a reduced cost alternative to reversal or replacement if the Girth gear is deemed retrievable.





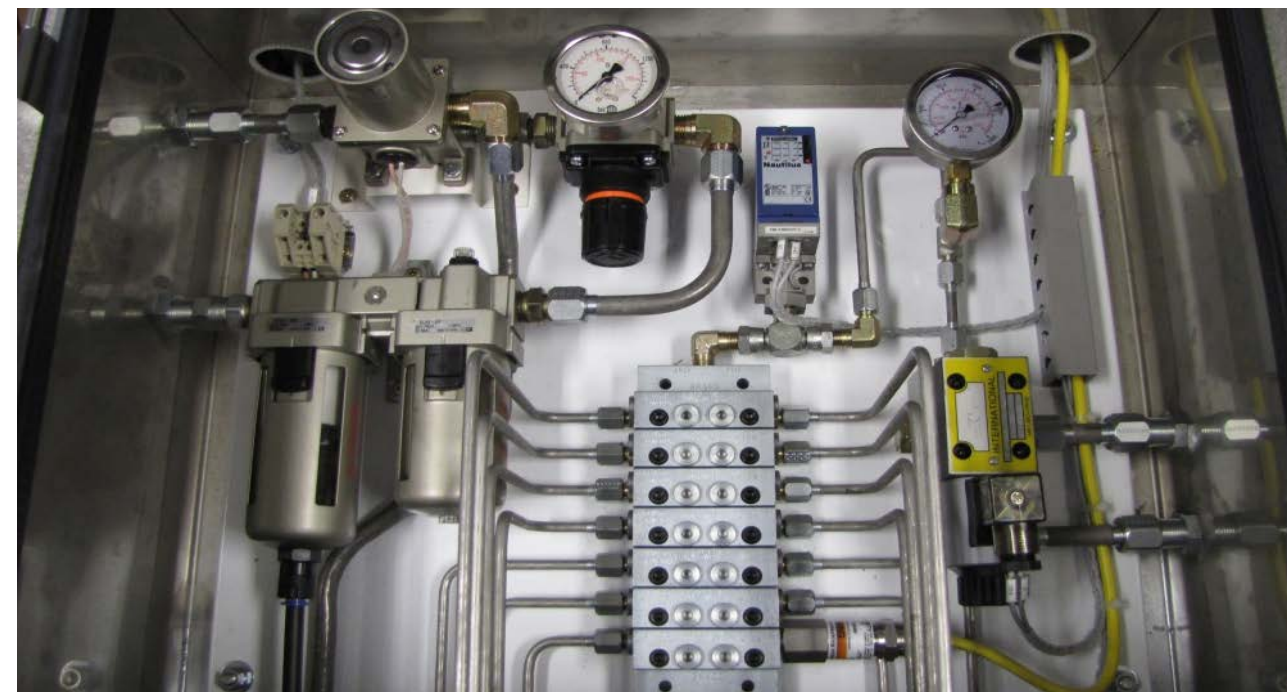
LUBRICATION SYSTEM

DESIGNED FOR MAINTENANCE "PEACE OF MIND".

The Fuchs Lubricants Open Gear Lubrication System provides "Peace of Mind" by ensuring optimum protection of one of the most critical site assets—your machine Open Gear Drive.

The system is enclosed in IP65 rated STAINLESS STEEL cabinets and comprises of an Allen Bradley stand alone PLC incorporating an easy to use colour AB Panel view.

Protection of the gear drive is provided by full component monitoring, visual and audible alarms, on screen system mimic panel and a 20 minute fault emergency shut down timer.



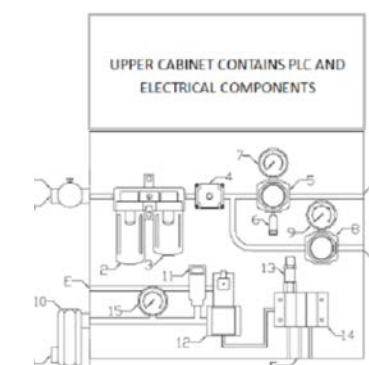
BEARING LUBRICATION SYSTEM

The Fuchs Lubricants Bearing Lubrication System provides "Peace of Mind" by ensuring optimum protection of your machines critical bearings.

Suitable for all bearing and bearing seal applications including grinding mills, rotary kilns, crushers etc.

The system is enclosed in an IP65 rated STAINLESS STEEL cabinet and comprises of an Allen Bradley stand alone PLC. Systems are provided with full maintenance manuals and replacement part numbered schematic labelling.

Protection of the machine is provided by full system component monitoring, visual and audible alarms and a variable shut down timer to suit your specific needs.





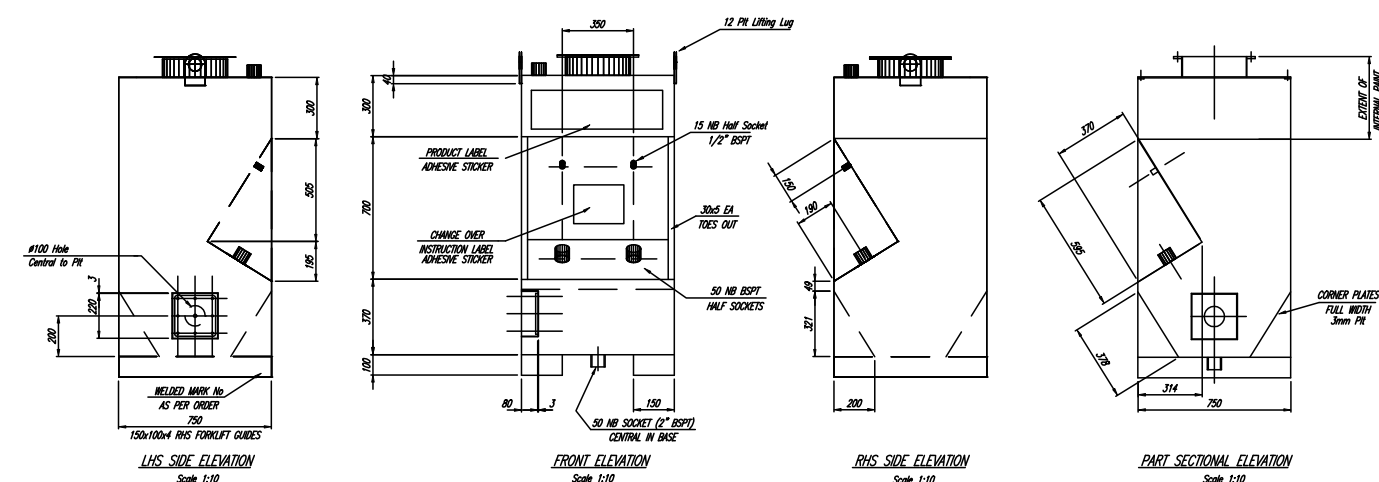
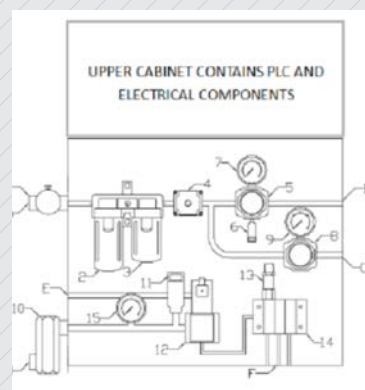
ECONOLUBE LUBRICATION SYSTEM

Protection of your machine Open Gear Drive is essential to your operation.

The ECONOLUBE Open Gear system provides optimum protection of your asset at an economic price.

The system is enclosed in an IP65 rated STAINLESS STEEL cabinet and comprises of an Allen Bradley stand alone PLC.

The system is provided with full maintenance manuals and replacement part numbered schematic labelling. Protection of your machine is provided by full component monitoring, visual and audible alarms and a variable shutdown timer to suit your specific needs.



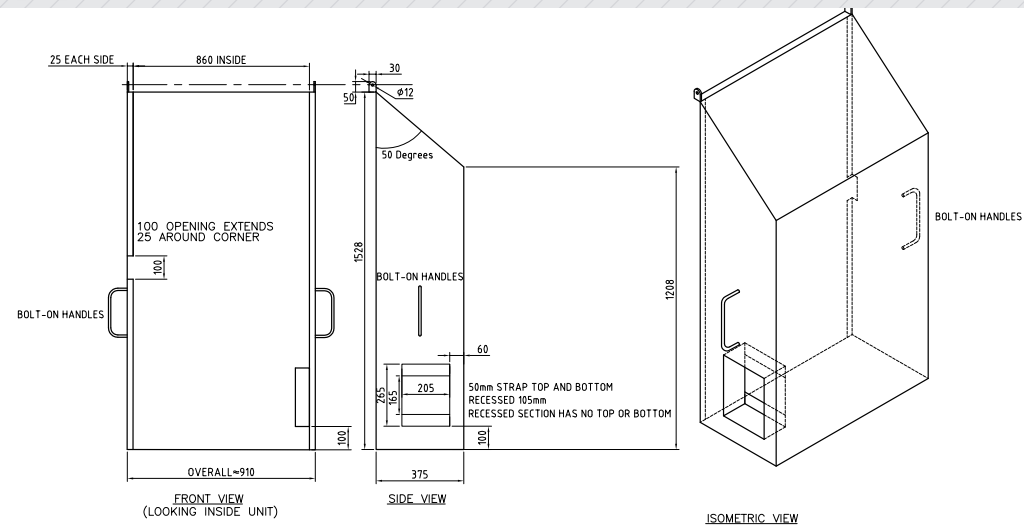
BULK CONTAINERS

Fuchs Lubricants Bulk Containers are provided to our customers upon request and are considered to be more economical & environmentally friendly than drum supply.

The Bulk containers hold equivalent to 3 x drums of lubricant therefore;

- > Less lubricant drum change outs are required.
- > Reduced risk of contaminants entering the lubrication system that may result in system blockages and equipment down time.
- > Eliminates sites disposal of waste empty drums containing residual lubricant.
- > Customer is only invoiced for lubricant required for replenishment of bin.
- > Easily located using a forklift .
- > Can be utilised to service one piece of equipment or as a central supply for multiple systems.
- > Bulk containers remain the property of Fuchs Lubricants and are provided to the customer on request for the duration of any supply arrangement.





BULK CONTAINER HEATER

The onset of the Winter months ensures a drop in ambient conditions and the possibility of lubricant pumpability issues.

Fuchs Open Gear Division can supply our purpose built heater shrouds designed to heat not only the lubricant within the bulk container but also the lubricant pump to ensure effective pumping on even the coldest of nights.

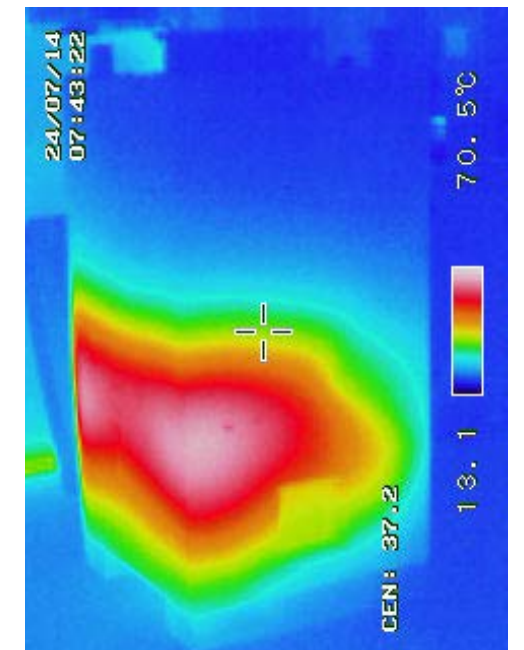
- > The cover simply fits to the front of the bulk container and the thermostat is set at 40 degree's "C".
- > 1.2mm aluminium outer skin, grade 5005, untreated mill finish with reinforced angle edges.
- > "Stopcon" silver sheet backing insulation and side handles for manoeuvring.
- > 50,000 hour service life on axial fan and bearings with integrated solid state temperature controller including display.
- > "T" type thermocouple temperature sensor.
- > Over temperature safety cut out switch.
- > 10 amp 240 VAC plug and 2.7m lead.



BULK CONTAINER HEATER BLANKET

Fuchs Open Gear Division can supply a cost effective, purpose built heater jacket designed to maintain the core temperature of the lubricant within the bulk container to ensure effective pumping on even the coldest of nights.

- > Heater blanket covers the lower 600mm of the rear and sides of the bulk container warming the region of the pump pick up.
- > Secured with heavy duty plastic buckles that allow full access to front pump fittings plus height adjustable straps keep the assembly in place.
- > Protection of the heating blanket from dust and grime is provided by a durable made to measure Velcro attached PVC cover.
- > One man operation to fit and remove.
- > Hi Heat style 1400w, 1500w or 1600w 0 90 Deg C thermostat fitted with a 60 Deg C protection limiter switch.
- > 5m double insulated armoured power lead.



CEPLATTYN® GT 10

Light-coloured, high-viscosity adhesive lubricant with white solid lubricants for Open Gears.

CEPLATTYN GT 10 is a high-viscosity adhesive lubricant for heavy-duty Open Gears, e.g. on kilns, mills and driers in the raw materials industry.

CEPLATTYN GT 10 is based on a synthetic base oil, new types of additives, and a combination of white, reaction-effective solid lubricants.

This combination guarantees extraordinarily good wear protection and an extremely high lubricant film stability.

CEPLATTYN GT 10 together with CEPLATTYN GT P (Primer) and CEPLATTYN GT RN (Running-In) represents the FUCHS LUBRITECH Multi-Phase Lubrication.

FIELDS OF APPLICATION

CEPLATTYN GT 10 has been especially developed for the application on Open Gears under critical operating conditions, such as low-speed kiln drives with increased tooth flank temperatures, mill drives with extreme drive power, and drives which are frequently operated under start-stop conditions.

CEPLATTYN GT 10 includes flame-retarding substances reducing the danger of ignition, e.g. on the hot kiln shell. Furthermore CEPLATTYN GT 10 has a restricted flowability outside the meshing and is thus prevented to a large extent from leaving the gear guard.

As opposed to conventional fluids CEPLATTYN GT 10 develops a thick lubricating film on the tooth flank which does not flow off of the metal surface, not even after a stoppage of the equipment. Thus CEPLATTYN GT 10 reliably protects from wear in the starting phase of the equipment which can happen with conventional fluids.

The high portion of reaction-effective white solid lubricants prevents a seizure of the tooth flanks even in unfavorable lubricating and meshing conditions.

CEPLATTYN GT 10 meets the requirements of AG-MA 9005-E01 / D-2.

METHOD OF APPLICATION

CEPLATTYN GT 10 is suitable for the application in immersion bath, circulation lubrication and spraying systems. In terms of spraying applications a heating system is recommended with ambient temperatures below +10 °C/+50 °F.

FEATURES

- temperature range: 0/ +140 °C / +32/+280 °F recommended application temperature: > +10°C/+ 50 °F
- excellent wear protection
- very good dry running properties
- unlimited suitability for kiln and mill drives
- no self-ignition on the hot kiln shell
- thick lubricating film
- very good lubricating film stability on the stationary tooth flank
- free of solvent and bitumen.

Approvals and references available upon request.

CEPLATTYN® KG 10 HMF-2500

Highly-viscous sprayable adhesive lubricant for Open Gear drives, free of heavy metals and chlorine.

CEPLATTYN KG 10 HMF-2500 is based on an especially selected high-viscosity base oil with aluminium-complex soap as a thickener. Its special additive package, which is free of heavy metals and chlorine, together with its content of the purest and finest colloidal graphite and adhesion additives results in exceptional performance. CEPLATTYN KG 10 HMF-2500 is free of solvents.

CEPLATTYN KG 10 HMF-2500, CEPLATTYN RN and CEPLATTYN 300 represent the balanced system of the FUCHS LUBRITECH multi-phase lubrication.

FIELDS OF APPLICATION

CEPLATTYN KG 10 HMF-2500 is especially suited for shock loads in heavy-duty applications because of its high base oil viscosity and the resulting good cushioning effect. The high content of solid lubricants guarantees temperature stability of the lubricating film, even beyond the normal temperature range.

CEPLATTYN KG 10 HMF-2500 serves as an operating lubricant for Open Gear drives with extreme load peaks and especially in case of pre-damaged tooth flanks.

METHOD OF APPLICATION

CEPLATTYN KG 10 HMF-2500 is sparingly applied by commercially available spraying systems. At temperatures below +5 °C / + 40°F, additional measures have to be taken to ensure the sprayability, for instance heating. Consumption is subject to the operational requirements.

FEATURES

- water-resistant
- temperature range: + 5 / +140 °C +40 / +280 °F
- excellent anti-wear properties
- outstanding adhesive properties
- very good corrosion protection properties
- high resistance to compression
- reduces tribocorrosion
- excellent cushioning effect
- excellent stability of lubricating film

Approvals and references available upon request.

CEPLATTYN® KG 10 HMF-1000

Sprayable, high-alloyed, graphite-containing adhesive lubricant for Open Gears.

CEPLATTYN KG 10 HMF-1000 is based on a high-viscosity base oil mixture with aluminium-complex soap as a thickener. The purest and finest colloidal graphite included in CEPLATTYN KG 10 HMF-1000 and its special additive package provide CEPLATTYN KG 10 HMF-1000 with its unmatched properties.

CEPLATTYN KG 10 HMF-1000 together with CEPLATTYN RN and CEPLATTYN 300 represent the balanced system of the FUCHS LUBRITECH multi-phase lubrication.

FIELDS OF APPLICATION

CEPLATTYN KG 10 HMF-1000 can be used for heavy-load applications because of its high base oil viscosity and the resulting cushioning effect. The high content of solid lubricants guarantees temperature stability of the lubricating film, even if the normal temperature range is exceeded. CEPLATTYN KG 10 HMF-1000 serves as an operating lubricant for Open Gear drives, as primarily used in rotary kilns, ball mills for coal grinding, dryers, and large excavators, for example used in primary industries. Large chains, gear racks, and sliding surfaces in steel hydraulics construction can also be lubricated reliably.

METHOD OF APPLICATION

CEPLATTYN KG 10 HMF-1000 is applied by commercially available spraying systems.

FEATURES

- water-resistant
- temperature range: -10 / +140 °C +14 / +280 °F
- extremely high resistance to compression
- excellent anti-wear properties
- very good corrosion protection properties
- very adhesive
- reduces tribocorrosion
- good cushioning effect
- applicable by all conventional spraying systems

Approvals and references available upon request.

CEPLATTYN® MG 15 HMF

Sprayable adhesive lubricant for large Open Gears.

CEPLATTYN MG 15 HMF is based on a high-quality base oil, thickened with aluminium complex soap. The product contains colloidal graphite of the highest purity and fineness and in addition a carefully determined additive package, which is chlorine free and contains no heavy metals, together with adhesive additives. Together with CEPLATTYN 300 and CEPLATTYN RN, CEPLATTYN MG 15 HMF forms one of LUBRITECH'S matched multiphase lubrication systems.

FIELDS OF APPLICATION

CEPLATTYN MG 15 HMF is used on the gear rim drives of tube mills, rotary kilns, dryers and crushers, which are to be found in the raw materials industry or the power station sector.

In addition CEPLATTYN MG 15 HMF is suitable for the lubrication of chains and heavily loaded sliding guides in rough operating conditions, e.g. in the mining industry.

METHOD OF APPLICATION

CEPLATTYN MG 15 HMF is handled using standard spray lubrication systems.

FEATURES

- excellent protection against wear
- good resistance to water
- can be applied with all common spray lubrication systems
- forms adhesive lubricating film even at increased operating temperatures
- reduces tribocorrosion
- very good corrosion-preventive ability
- high scuffing load capacity
- extremely high pressure resistance
- temperature range for use: -10 / +140 °C
- free from heavy metals, chlorine and solvents

Approvals and references available upon request.

CEPLATTYN® RN

Sprayable running-in lubricant for Open Gears.

CEPLATTYN RN is based on a mineral base oil and an aluminium-complex soap as thickener. It is highly graphited, adhesive and sprayable. CEPLATTYN RN does neither contain bitumen nor solvent. In addition it is free of heavy metals and chlorine.

CEPLATTYN RN together with CEPLATTYN 300 and CEPLATTYN KG 10 HMF represent the FUCHS LUBRITECH multi-phase system.

FIELDS OF APPLICATION

CEPLATTYN RN can be applied to single and double pinion drives of any kind of tube mills and kilns, e.g. in cement works, fertilizer plants, combustion and compost units.

CEPLATTYN RN is applied to gear drives with high performance. Furthermore it is used when running under critical operating conditions, when having big tooth widths or when running with high speeds..

METHOD OF APPLICATION

CEPLATTYN RN is applied via automatic spraying systems: Spraying should be effected permanently and with highest possible quantity.

Running-in of gears should start only after best alignment of the gear. Primary lubrication of tooth flanks should be effected with CEPLATTYN 300, according to our INSTRUCTIONS FOR RUNNING IN.

FEATURES

- temperature range: -10 / +140°C
- reduces surface roughness to a minimum
- improves quality of tooth flanks
- extends life time of the gear
- free of chlorine and heavy metals

Approvals and references available upon request.

CEPLATTYN GT® RN

Sprayable running-in lubricant for Open Gears.

CEPLATTYN GT RN is a running-in lubricant for Open Gear drives on Kilns and Mills in the raw materials industry.

Together with CEPLATTYN GT P and the operational lubricants of the CEPLATTYN GT range CEPLATTYN GT RN represents the FUCHS LUBRITECH Multi-Phase-Lubrication system for Open Gear drives.

FIELDS OF APPLICATION

CEPLATTYN GT RN is used to smooth the tooth-surfaces of new installed girth gears and pinions and for optimisation of the load carrying pattern.

METHOD OF APPLICATION

CEPLATTYN GT RN is applied via automatic spray systems.

The lubricant quantity should be 2-3 times higher compared to operational lubricant quantities.

We also refer to our Instructions for running-in for large Open Gears.

FEATURES

- temperature range: -10 / +120°C application temperature >0°C
- smooth and reduces surface roughness
- improves tooth flank quality
- extends lifetime of the gears
- free of solvent and heavy metals

CEPLATTYN® 300

Primer for large Open Gears and for the lubrication of toothed racks and sliding surfaces.

CEPLATTYN 300 is a high-graphite adhesive lubricant based on a selected base oil and contains EP additives and tackiness improvers.

CEPLATTYN 300 is free of bitumen, heavy metals and solvents.

In combination with CEPLATTYN RN and CEPLATTYN KG 10 HMF, CEPLATTYN 300 represents the FUCHS LUBRITECH multi-phase system.

FIELDS OF APPLICATION

CEPLATTYN 300 is recommended as primer for large Open Gears, gear racks and sliding surfaces. It is also used as an assembly paste for screws/bolts and pins.

It is also suitable for wire rope lubrication and preservation as well as in steel hydraulics construction for chains, sliding surfaces, and gear tooth systems.

METHOD OF APPLICATION

CEPLATTYN 300 is applied manually on clean surfaces.

Note

CEPLATTYN 300 also available in aerosol cans as CEPLATTYN 300 SPRAY.

FEATURES

- protects against corrosion
- temperature range of lubricant film: -30 / +250 °C
- dry film up to +500 °C
- excellent adhesion
- outstanding protection against wear
- forms a solid lubricant film under pressure
- forms a „dry“ lubricating film, which repels dust
- water-resistant

Approvals and references available upon request.

STABYL L-TS MO

High performance, lithium soap grease containing solid lubricants.

STABYL L-TS MO is a lithium soap grease composed of a semi-synthetic base oil. In addition to additives to increase the ageing resistance, it contains an additive package especially improving EP characteristics and ensuring an excellent corrosion protection.

FIELDS OF APPLICATION

STABYL L-TS MO is particularly suited for all plain and roller bearings subjected to high dynamic loads. The combination of its stringiness and the extraordinary adhesion allows a very long grease life. Re-greasing intervals can be significantly extended when using STABYL L-TS MO.

METHOD OF APPLICATION

STABYL L-TS MO is suitable for initial filling or re-greasing using the usual methods (central lubrication systems, grease guns).

FEATURES

- excellent adhesion
- very good corrosion protection
- temperature range: -30 / +140 °C, short-term up to +150 °C
- high resistance to ageing and oxidation
- good thermal stability
- excellent worked stability
- good emergency lubrication characteristics

Approvals and references available upon request.

STABYL 300 AL 2

Graphite-containing aluminium-complex grease with very good EP and high temperature properties.

STABYL AL 2 is a graphite-containing, mineral oil-based aluminium-complex grease with very good EP and high temperature properties. It is a universal grease for a broad range of applications including maximum specific loads, elevated and considerably fluctuating temperatures.

FIELDS OF APPLICATION

STABYL AL 2 is employed for the greasing of plain and roller bearings, guides subjected to extreme loads, very high and considerably fluctuating temperatures in, for example, the raw materials industry, chemical industry, iron and steel industry, general engineering, crushing and grinding mills, sintering plants, calendars, extruders, vibrating screens (hot and cold), earth moving machinery, etc

METHOD OF APPLICATION

STABYL AL 2 is applied manually with suitable grease guns or via centralized lubrication systems.

FEATURES

- temperature range: -20 / +150 °C, short-term up to +180 °C
- excellent pressure absorbing capacity
- good wear protection
- high thermal and ageing stability
- good resistance to water
- reliable corrosion protection
- thermally and mechanically reversible
- good working stability

Approvals and references available upon request.

STABYL HD

EP grease for highly loaded plain and roller bearings operating under extreme conditions.

STABYL HD is a heavy-duty lithium soap grease containing a highly viscous base oil and wear-reducing EP additives and solid lubricants.

FIELDS OF APPLICATION

STABYL HD is primarily used in heavy equipment engineering, e.g. to lubricate large, low-speed roller bearings (self-aligning roller bearings) in roller mills and presses and plain bearings subject to high surface pressures.

METHOD OF APPLICATION

STABYL HD is mainly applied via centralized lubrication systems.

FEATURES

- protects against corrosion
- reduces wear
- temperature range: -10 / +120 °C
- high resistance to aging
- excellent emergency lubrication
- good pressure absorption due to the high base oil viscosity

Approvals and references available upon request.

STABYL ECO EP 2

Environmentally harmless plain and roller bearing grease.

STABYL ECO EP 2 is a multi-purpose grease based on rapidly biodegradable ester oil, thickened with a lithium/calcium soap.

FIELDS OF APPLICATION

STABYL ECO EP 2 is used for the total-loss lubrication of plain and roller bearings subject to high and fluctuating loads, in a wide temperature range e.g. in

- general engineering,
- construction machinery,
- steel hydraulics construction,
- inland water transportation,
- sewage treatment,

METHOD OF APPLICATION

STABYL ECO EP 2 is applied manually or via commercially-available lubricating systems.

FEATURES

- good corrosion protection
- water resistant
- good adhesion
- temperature range: -40 / +120 °C, short-term up to +130 °C
- excellent EP-properties
- good work stability
- resistant to ageing

Approvals and references available upon request.

ACTION 707

High performance maintenance fluid for cleaning operational Open Gear Drives.

ACTION 707 is a high performance maintenance fluid, purpose built for cleaning Open Gears without downtime. Formulated with a unique blend of hydrocarbon solvents, high pressure lubricants and specialty surfactants, ACTION 707 is proven to lubricate during application. This eliminates downtime by allowing operation of the mill during the cleaning process.

APPLICATION

Apply ACTION 707 via spray nozzles directly onto the operating gears, typically via the inspection port. Prior to commencing the cleaning process, disable the lubrication system and prepare appropriate waste catchment arrangements. During application monitor the cleaning progress and operating temperature of the gears using a strobe light and infra-red sensor. The high pressure lubricant in ACTION 707 will maintain appropriate working temperatures of the ring gear and pinion during the cleaning process. Following approximately 40 minutes of application, commence a 15 minute grind out of the mill. The gears are now clean, and the machine is available for detailed inspection and maintenance as required.

Approvals and references available upon request.



Head Office Melbourne

49 McIntyre Road
Sunshine Victoria 3020
Phone: 1800 1800 13
Fax: 1800 1800 14
Email: customer.service@fuchs.com.au

Newcastle

2 Holland Street
Wickham NSW 2293
Phone: 02 4969 0444
Fax: 02 4969 0401

Perth

1011 Abernethy Road
Forrestfield WA 6058
Phone: 08 9365 6565
Fax: 08 9365 6500

fuchs.com.au